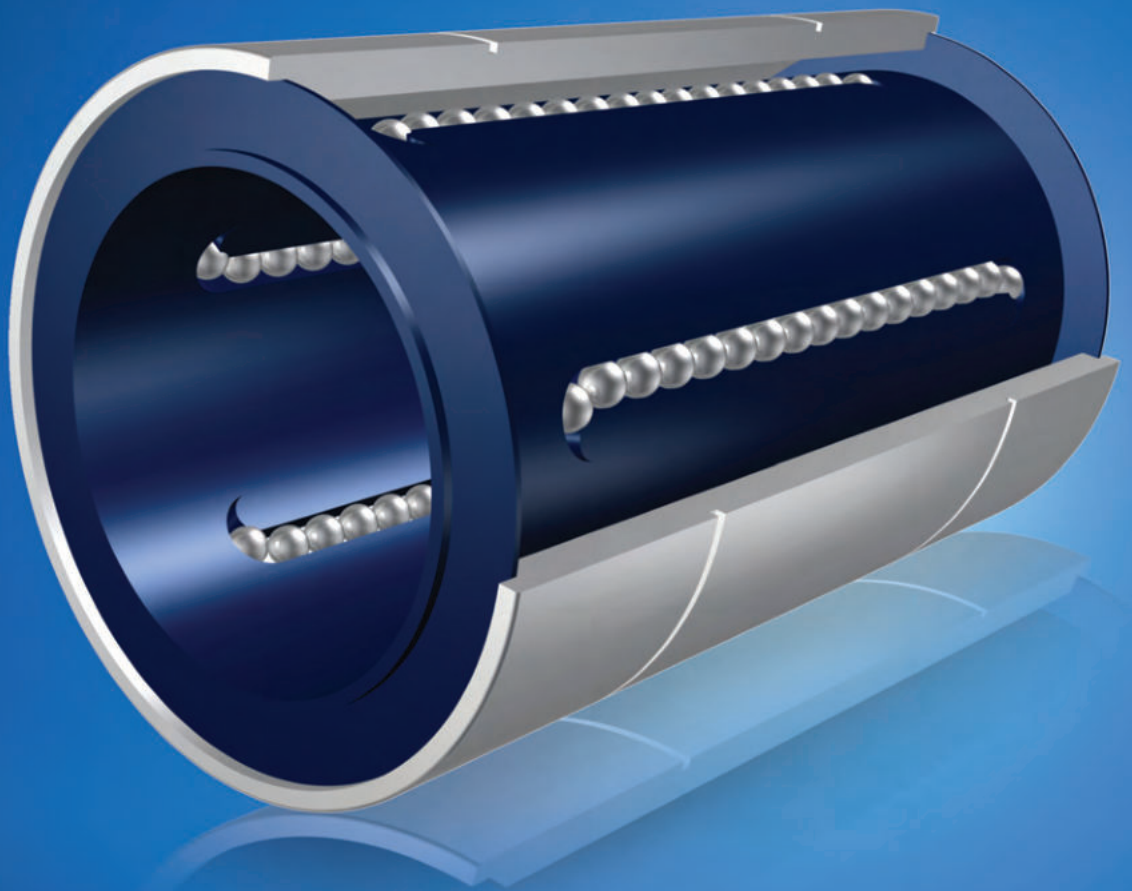


ZON™

BEARINGS FOR YOUR FUTURE



Linearkugellager / Linear Bearings



BEARINGS FOR YOUR FUTURE

Zen Ball Bearings are manufactured to the highest quality for standard and non-standard applications. Our technical department can modify any non-standard bearings to your specific requirements, regardless of quantity.

Apart from our extensive miniature ball bearing range of more than 1000 different types, ranging from 1-10 mm bore (Including inch dimensions), our range also includes Thin section, Three part thrust, Popular metric and any kind of non standard bearing. We are able to design bearings according to your requirements using new materials like ceramic or special steels for applications in Industry, Medicine, Chemistry and Food Processing.

Our technical department can modify any non-standard bearings to your specific requirements, even for small quantities.

For any items not listed in our catalogue, please contact our experienced sales team.



Linearkugellager Linear Bearings



Ölschmierung*
Oil lubrication*



Gummidichtscheiben verfügbar*
Rubber seal option available*

*KH and LM Series

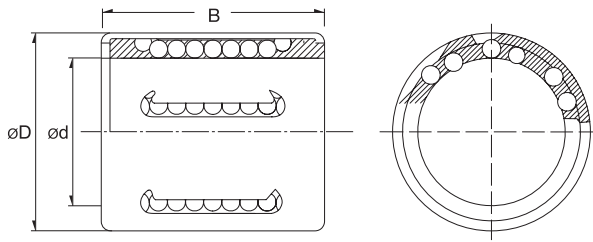


Zen Ball Bearings Shanghai has been awarded the German ISO TUV Rheinland certification for inspection of ZEN products.

This certification is the highest standard a business in our industry can achieve. It is internationally recognised as a guarantee of quality, customer focus and continual improvement.

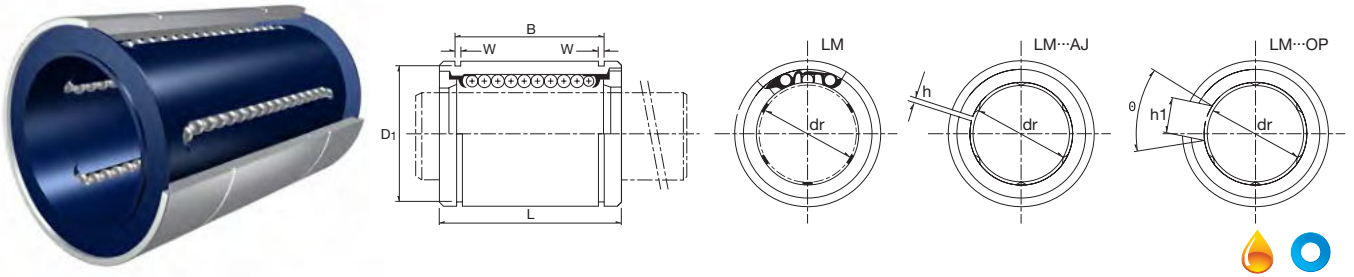
www.zen.biz

KH Serie



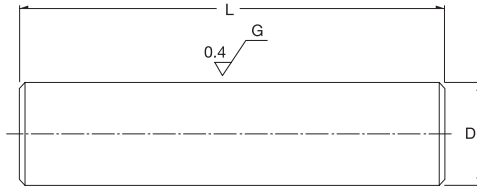
Designation/Type	Dimension (mm)			Load capacity		Mass (g) approx.
	ød	øD	B	Dyn	Stat.	
KH-0622 PP	6.0	12.0	22.0	400	239	7 g
KH-0824 PP	8.0	15.0	24.0	435	280	12 g
KH-1026 PP	10.0	17.0	26.0	500	370	14.5 g
KH-1228 PP	12.0	19.0	28.0	620	510	18.5 g
KH-1428 PP	14.0	21.0	28.0	620	520	20.5 g
KH-1630 PP	16.0	24.0	30.0	800	620	27.5 g
KH-2030 PP	20.0	28.0	30.0	950	790	32.5 g
KH-2540 PP	25.0	35.0	40.0	1990	1670	66 g
KH-3050 PP	30.0	40.0	50.0	2800	2700	95 g
KH-4060 PP	40.0	52.0	60.0	4400	4450	182 g
KH-5070 PP	50.0	62.0	70.0	5500	6300	252 g

LM Serie



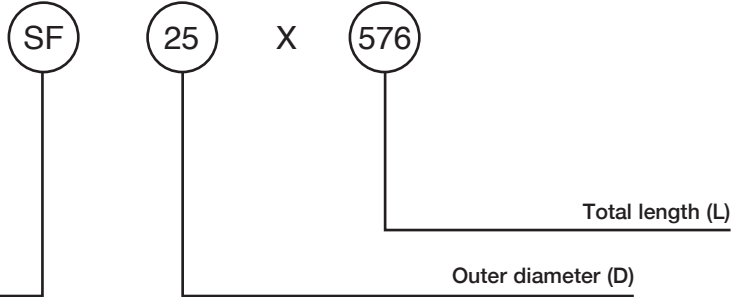
Nominal Part No						Nominal Shaft Diameter (mm)	Major Dimensions and Tolerance (mm)							
Standard Type	Seal Type	Ball Circuit	Mass(g) approx.	Adjustable Type	Open Type		dr	Tolerance				D1	h	h1
							D	L	B	W				
LM 4	LM 4 UU	4	1.4	-	-	4.0	8.0	12.0	-	-	-	-	-	-
LM 5	LM 5 UU	4	4	-	-	5.0	10.0	15.0	10.2	1.1	9.6	-	-	-
LM 6	LM 6 UU	4	8	LM 6-AJ	-	6.0	12.0	19.0	13.5	1.1	11.5	1	-	-
LM 8S	LM 8S UU	4	11	LM 8S-AJ	-	8.0	15.0	17.0	11.5	1.1	14.3	1	-	-
LM 8	LM 8 UU	4	16	LM 8-AJ	-	8.0	15.0	24.0	17.5	1.1	14.3	1	-	-
LM 10	LM10 UU	4	30	LM 10-AJ	-	10.0	19.0	29.0	22.0	1.3	18	1	-	-
LM 12	LM 12 UU	4	31.5	LM 12-AJ	LM 12-OP	12.0	21.0	30.0	23.0	1.3	20	1.5	8	80°
LM 13	LM 13 UU	4	43	LM 13-AJ	LM 13-OP	13.0	23.0	32.0	23.0	1.3	22	1.5	9	80°
LM 16	LM 16 UU	5	69	LM 16-AJ	LM 16-OP	16.0	28.0	37.0	26.5	1.6	27	1.5	11	80°
LM 20	LM 20 UU	5	87	LM 20-AJ	LM 20-OP	20.0	32.0	42.0	30.5	1.6	30.5	1.5	11	60°
LM 25	LM 25 UU	6	220	LM 25-AJ	LM 25-OP	25.0	40.0	59.0	41.0	1.85	38	2	12	50°
LM 30	LM 30 UU	6	250	LM 30-AJ	LM 30-OP	30.0	45.0	64.0	44.5	1.85	43	2.5	15	50°
LM 35	LM 35 UU	6	390	LM 35-AJ	LM 35-OP	35.0	52.0	70.0	49.5	2.1	49	2.5	17	50°
LM 40	LM 40 UU	6	585	LM 40-AJ	LM 40-OP	40.0	60.0	80.0	60.5	2.1	57	3	20	50°
LM 50	LM 50 UU	6	1580	LM 50-AJ	LM 50-OP	50.0	80.0	100.0	74.0	2.6	76.5	3	25	50°
LM 60	LM 60 UU	6	2000	LM 60-AJ	LM 60-OP	60.0	90.0	110.0	85.0	3.15	86.5	3	30	50°

SF Serie



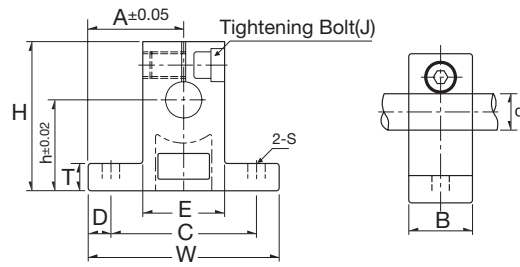
Material

SFH	SUJ2	(hollow)
SFC	SUJ2	(solid chrome plating)
SFHC	SUJ2	(hollow chrome plating)
SSF	SUS440	(solid)
SSFH	SUS440	(hollow)
SFS	S45	(solid)
SFSC	S45	(solid chrome plating)



Designation /Type	Outer Diameter		Length L (mm)													Mass (g) approx.	
	D (mm)	Tolerance g6 μm	100	200	300	400	500	600	800	1000	1200	1500	1800	2000			
			[Grid for length selection]														
SF 6	6	-4/-12	100					600									230 g
SF 8	8	-5							800								400 g
SF10	10	-14		200						1000							620 g
SF12	12	-6										1500					890 g
SF13	13																
SF16	16	-17			300										2000		1580 g
SF20	20	-7															2470 g
SF25	25						400										
SF30	30	-20															5550 g
SF35	35	-9							500								7550 g
SF40	40																
SF50	50	-25								600							15400 g

SK Serie



6

Designation /Type	Shaft diameter	Dimension (mm)											Mass (g) approx.
		h	A	W	H	T	E	D	C	B	S	J	
SK8	Ø8	20.0	21.0	42.0	32.8	6.0	18.0	5.0	32.0	14.0	Ø5.5	M4	24 g
SK10	Ø10	20.0	21.0	42.0	32.8	6.0	18.0	5.0	32.0	14.0	Ø5.5	M4	24 g
SK12	Ø12	23.0	21.0	42.0	38.0	6.0	20.0	5.0	32.0	14.0	Ø5.5	M4	30 g
SK13	Ø13	23.0	21.0	42.0	38.0	6.0	20.0	5.0	32.0	14.0	Ø5.5	M4	30 g
SK16	Ø16	27.0	24.0	48.0	44.0	8.0	25.0	5.0	38.0	16.0	Ø5.5	M4	40 g
SK20	Ø20	31.0	30.0	60.0	51.0	10.0	30.0	7.5	45.0	20.0	Ø6.6	M5	70 g
SK25	Ø25	35.0	35.0	70.0	60.0	12.0	38.0	7.0	56.0	24.0	Ø6.6	M6	130 g
SK30	Ø30	42.0	42.0	84.0	70.0	12.0	44.0	10.0	64.0	28.0	Ø9	M6	180 g
SK35	Ø35	50.0	49.0	98.0	85.0	15.0	50.0	12.0	74.0	32.0	Ø11	M8	270 g
SK40	Ø40	60.0	57.0	114.0	96.0	15.0	60.0	12.0	90.0	36.0	Ø11	M8	420 g

www.zen.biz

