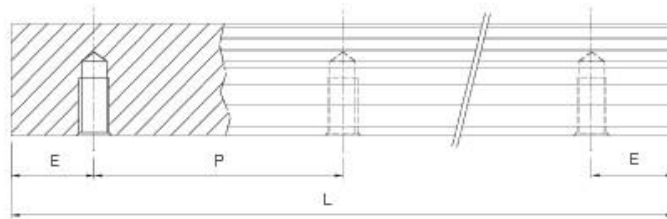
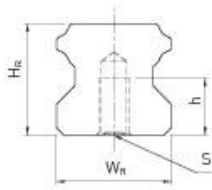


HGR-T



Series Size	Dimensions of the rail [mm]					Max. length [mm]	Max. length $E_1 = E_2$	$E_{1/2}$ min [mm]	$E_{1/2}$ max [mm]	Mass [kg/m]
	W_R	H_R	S	h	P					
HGR15T	15	15,0	M5	8,0	60,0	4000,0	3900,0	6,0	54,0	1,48
HGR20T	20	17,5	M6	10,0	60,0	4000,0	3900,0	7,0	53,0	2,29
HGR25T	23	22,0	M6	12,0	60,0	4000,0	3900,0	8,0	52,0	3,35
HGR30T	28	26,0	M8	15,0	80,0	4000,0	3920,0	9,0	71,0	4,67
HGR35T	34	29,0	M8	17,0	80,0	4000,0	3920,0	9,0	71,0	6,51
HGR45T	45	38,0	M12	24,0	105,0	4000,0	3885,0	12,0	93,0	10,87
HGR55T	53	44,0	M14	24,0	120,0	4000,0	3840,0	14,0	106,0	15,67
HGR65T	63	53,0	M20	30,0	150,0	4000,0	3750,0	15,0	135,0	21,73