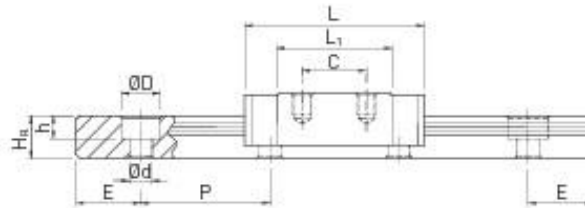
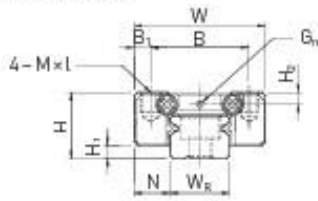
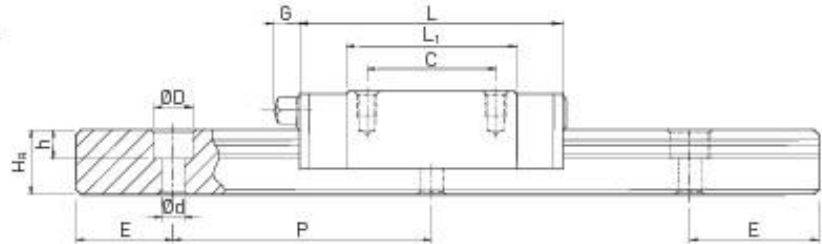
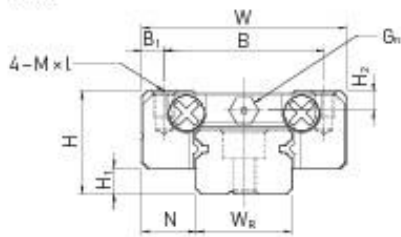


MGN7, MGN9, MGN12



MGN15



Installation dimensions [mm]	Dimensions of the block [mm]						Series/Size	Dynamic load C_{dyn} [N]*	Static load C_0 [N]
	H	W	B	C	L_1	L			
8	17	12,0	8	13,5	22,5	$M2 \times 2,5$	MGN07C	980	1240
8	17	12,0	13	21,8	30,8	$M2 \times 2,5$	MGN07H	1370	1960
10	20	15,0	10	18,9	28,9	$M3 \times 3$	MGN09C	1860	2550
10	20	15,0	16	29,9	39,9	$M3 \times 3$	MGN09H	2550	4020
13	27	20,0	15	21,7	34,7	$M3 \times 3,5$	MGN12C	2840	3920
13	27	20,0	20	32,4	45,4	$M3 \times 3,5$	MGN12H	3720	5880
16	32	25,0	20	26,7	42,1	$M3 \times 4$	MGN15C	4610	5590
16	32	25,0	25	43,4	58,8	$M3 \times 4$	MGN15H	6370	9110

